

## Tips for Parents

### Reading

- Make time for the library.
- Play games together like Scrabble, Spill and Spell, Scattergories, and Balderdash
- Work crossword puzzles with your child
- Read to and with your child.

### Math

- Spend time with your child engaging in simple board games, puzzles, and activities that require mathematics skills.
- Encourage your child to solve problems. Provide assistance, but let them figure it out themselves.
- The kitchen is filled with tasty opportunities to teach fractional measurements.

### Websites

[www.aaamath.com](http://www.aaamath.com)

[www.coolmath.com](http://www.coolmath.com)

[www.funbrain.com](http://www.funbrain.com)

[www.vocabulary.com](http://www.vocabulary.com)

[www.nwea.org](http://www.nwea.org) (parent toolkit)

[www.readingrockets.org/audience/parents](http://www.readingrockets.org/audience/parents) (PreK-3)

[www.adlit.org](http://www.adlit.org) (Gr. 4-8)

[www.colorincolorado.org/families](http://www.colorincolorado.org/families)  
(English Language Learners)

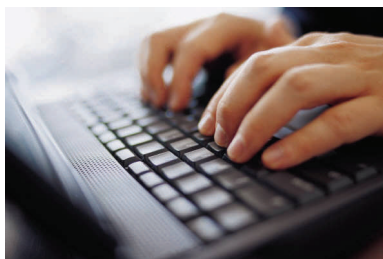
## What is MAP and why are we using it?

In Spring 2010, Cook County School District 130 received approval from the Board of Education to implement MAP (Measures of Academic Progress), an assessment program in grades K-8.

Results of the tests help teachers plan for instruction and help the school to plan for continuous improvement. They let the teachers know where a student's strength are and if help is needed in any specific areas.

Students take computer-generated tests in reading and math in the fall, winter and spring. The tests are not timed and can take from 15 minutes in the primary grades to an hour in the other grades. The tests are adaptive and the difficulty of each question is based on how well your child answered the previous question.

Parents should receive reports from the school after testing is completed that indicate your child's estimated level of achievement. Just as you measure your child's height, these assessments measure your child's growth in reading and mathematics. The scale used to measure your child's progress is called the RIT (Rasch unIT) scale. It will be used to chart your child's growth each year and year to year.



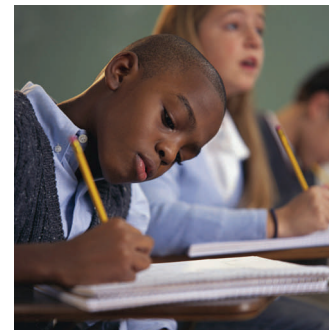
### Definitions

**RIT**— is a measurement scale developed to simplify the meaning of test scores. RIT scores range from about 100 to 280.

**Percentile Rank**— is a statistic that indicates how well a student performed in comparison to the students in a norm group. Your child's percentile rank is part of the promotion criteria in Cook County District 130.

## Cook County School District 130

# MAP



## *M* easures of *A* cademic *P* rogress

### *Achievement Level Tests in Math and Reading*

developed by  
Northwest Evaluation Association

**MAP tests measure growth  
in learning**

---

## Parent Brochure