

**Greenwood School**  
**Cook County SD 130**  
**Blue Island, ILLINOIS**



**ILLINOIS**  
**SCHOOL**  
**REPORT**  
**CARD**

**GRADES : K**

State and federal laws require public school districts to release report cards to the public each year.

Starting in 2009, charter school information is included in district statistics.

**STUDENTS**

RACIAL/ETHNIC BACKGROUND AND OTHER INFORMATION														
	White	Black	Hispanic	Asian/ Pacific Islander	Native American	Multi racial /Ethnic	Percent Low- Income	Percent Limited- English- Proficient	Percent IEP	High Sch. Dropout Rate	Chronic Truancy Rate	Mobility Rate	Attendance Rate	Total Enrollment
<b>School</b>	13.3	28.9	53.0	0.0	0.0	4.8	48.2	38.6	9.6		0.0	19.5	93.0	83
<b>District</b>	16.0	26.9	52.9	0.4	0.1	3.6	79.9	21.9	14.6		1.7	12.2	95.5	3,612
<b>State</b>	52.8	18.8	21.1	4.2	0.2	2.9	45.4	7.6	13.1		3.6	13.0	93.9	2,064,312

**Low-income** students come from families receiving public aid; live in institutions for neglected or delinquent children; are supported in foster homes with public funds; or are eligible to receive free or reduced-price lunches.

**IEP** Students are those students eligible to receive special education services.

**Limited-English-proficient** students are those students eligible for transitional bilingual programs.

**Mobility rate** is based on the number of times students enroll in or leave a school during the school year.

**Chronic truants** are students who are absent from school without valid cause for 18 or more of the last 180 school days.

**INSTRUCTIONAL SETTING**

PARENTAL CONTACT*		STUDENT-TO-STAFF RATIOS			
	Percent	Pupil- Teacher Elementary	Pupil- Teacher Secondary	Pupil- Certified Staff	Pupil- Administrator
<b>School</b>	100.0	--	--	--	--
<b>District</b>	99.0	15.4		11.5	136.7
<b>State</b>	96.2	18.2		13.3	203.8

\* Parental contact includes parent-teacher conferences, parental visits to school, school visits to home, telephone conversations, and written correspondence.

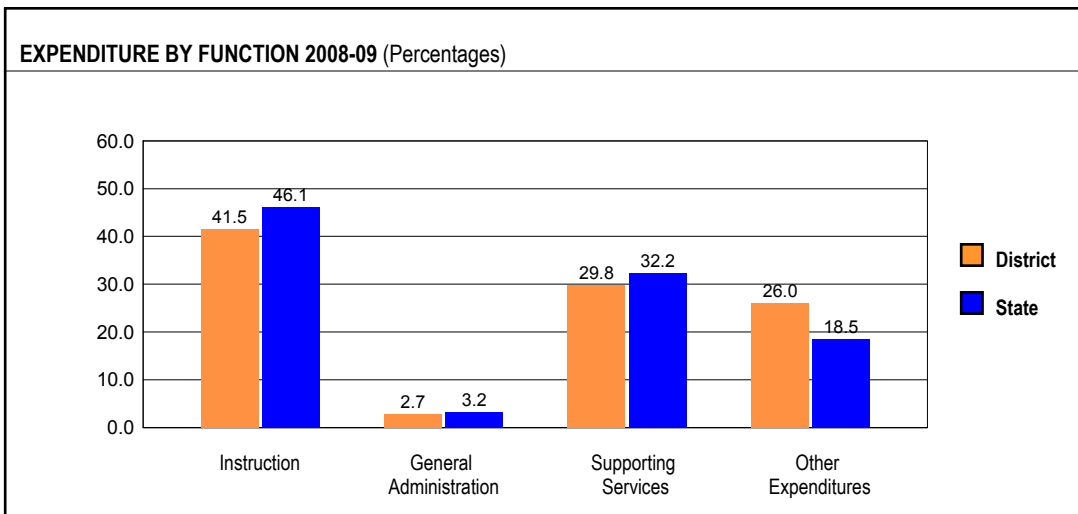
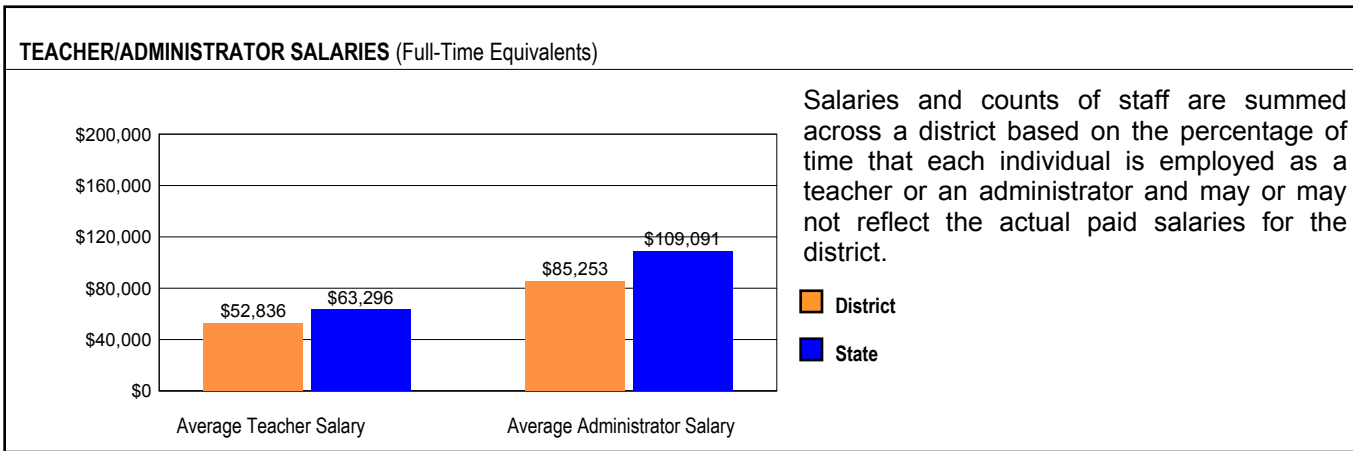
AVERAGE CLASS SIZE (as of the first school day in May)										
Grades	K	1	2	3	4	5	6	7	8	9 - 12
<b>School</b>	18.0									
<b>District</b>	18.0									
<b>State</b>	20.7									

TEACHER INFORMATION (Full-Time Equivalents)								
	White	Black	Hispanic	Asian/ Pacific Islander	Native American	Male	Female	Total Number
<b>District</b>	76.8	7.6	15.6	0.0	0.0	10.7	89.3	289
<b>State</b>	85.2	8.1	5.2	1.4	0.2	23.0	77.0	132,502

TEACHER INFORMATION ( Continued )					
	Average Teaching Experience (Years)	% of Teachers with Bachelor's Degrees	% of Teachers with Master's & Above	% of Teachers with Emergency or Provisional Credentials	% of Classes Not Taught by Highly Qualified Teachers
School	--	--	--	0.0	0.0
District	12.8	47.2	52.4	0.0	0.0
State	12.7	42.2	57.4	0.5	0.7

Some teacher/administrator data are not collected at the school level.

## SCHOOL DISTRICT FINANCES



REVENUE BY SOURCE 2008-09				EXPENDITURE BY FUND 2008-09			
	District	District %	State %		District	District %	State %
Local Property Taxes	\$24,255,417	57.8	58.4	Education	\$34,427,059	65.9	69.6
Other Local Funding	\$1,423,395	3.4	6.9	Operations & Maintenance	\$2,953,034	5.7	7.9
General State Aid	\$5,856,525	13.9	14.5	Transportation	\$2,502,170	4.8	3.8
Other State Funding	\$4,406,914	10.5	8.3	Debt Service	\$4,152,395	7.9	7.0
Federal Funding	\$6,044,674	14.4	11.9	Tort	\$378,772	0.7	1.2
TOTAL	\$41,986,925			Municipal Retirement/ Social Security	\$1,145,816	2.2	1.8
				Fire Prevention & Safety	\$1,299,392	2.5	0.8
				Site & Construction/ Capital Improvement	\$5,387,967	10.3	7.9
				TOTAL	\$52,246,605		

OTHER FINANCIAL INDICATORS				
	2007 Equalized Assessed Valuation per Pupil	2007 Total School Tax Rate per \$100	2008-09 Instructional Expenditure per Pupil	2008-09 Operating Expenditure per Pupil
District	\$182,363	3.72	\$6,127	\$9,349
State	**	**	\$6,483	\$11,197

\*\* Due to the way Illinois school districts are configured, state averages for equalized assessed valuation per pupil and total school tax rate per \$100 are not provided.

**Equalized assessed valuation** includes all computed property values upon which a district's local tax rate is calculated.

**Total school tax rate** is a district's total tax rate as it appears on local property tax bills.

**Instructional expenditure per pupil** includes the direct costs of teaching pupils or the interaction between teachers and pupils.

**Operating expenditure per pupil** includes the gross operating cost of a school district excluding summer school, adult education, bond principal retired, and capital expenditures.